



Autoscope Camera Quick Start Guide



Scan to access the Online Help or by visiting bit.ly/3PB3ztL



What's in the Box

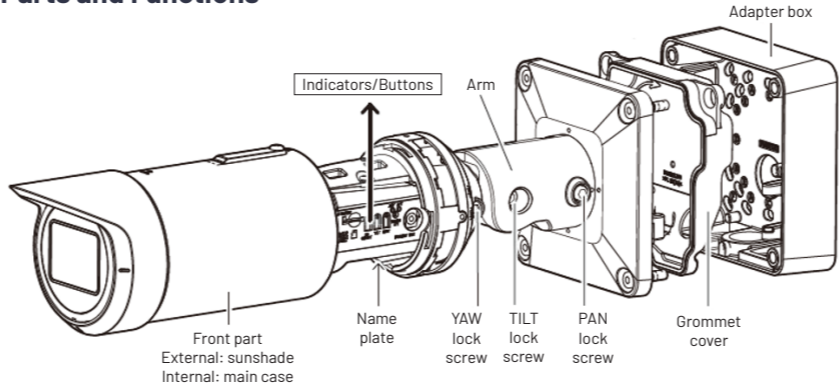


Other Required Equipment

- Mounting bracket supplies including stainless steel banding
- Phillips screwdriver
- RJ45 crimping tool
- Screwdriver or drill to secure banding
- 5/16 hex driver
- RJ45 connectors
- RJ45 crimping tool
- Outdoor rated Cat5e or Cat6 Ethernet cable
- Radios or cell phones to communicate between the cabinet and the bucket truck
- Computer and Ethernet network cable
- Faceplate cleaning supplies (lint-free lens tissue/cloth and spray bottle with water)



Parts and Functions



1 Remove the front part for preparations (see Figure 1).

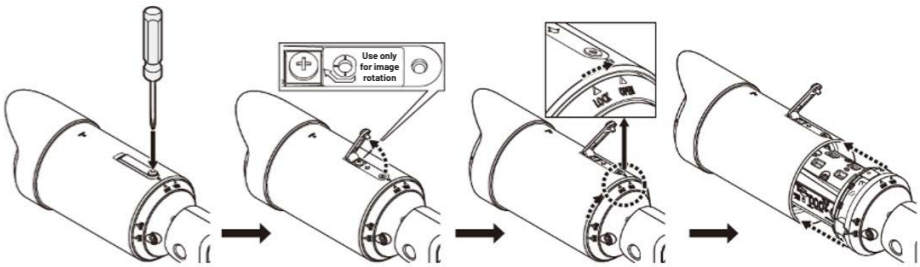


Figure 1: How to remove external sunshade



2 If using an external mount or conduit fixing hole and banding directly to pole or mast arm, feed the network cable through the access hole.

If banding to the pole, feed bands through the cutouts on the side of the adapter box (see Figure 2).

Attach the adapter box to the mounting bracket and use the torx screws to screw into the holes labeled **E** (see Figure 3).

Ground the adapter box to the pole or mast arm.

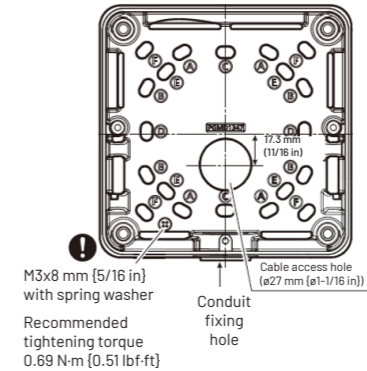


Figure 2: Adapter box

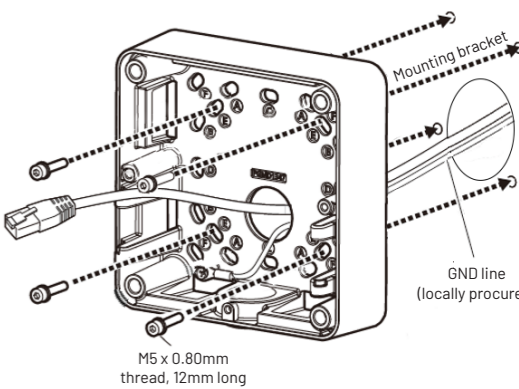
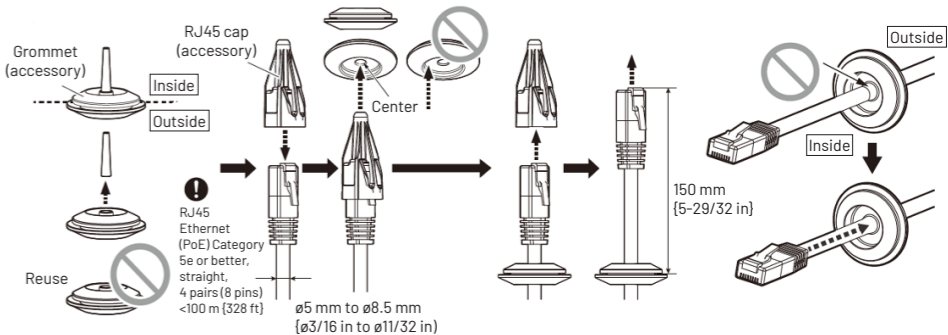


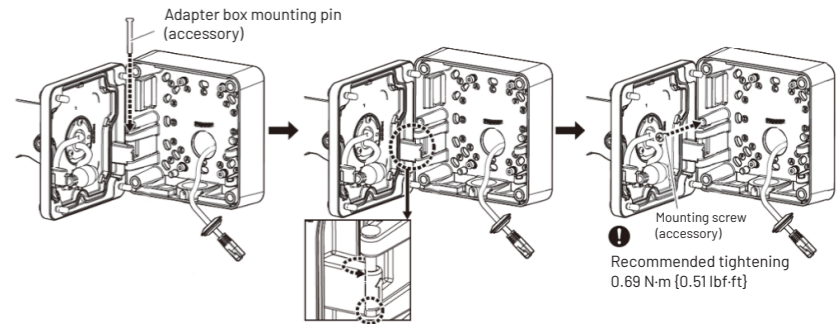
Figure 3: External mount banding



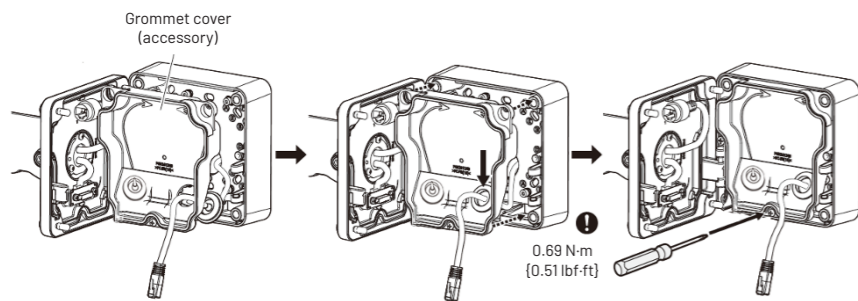
3 Install an RJ45 connector on the end of the Cat5e or Cat6 cable. Use the RJ45 cap to feed the cable through the included grommet. Then, slightly pull it back to seal it properly.



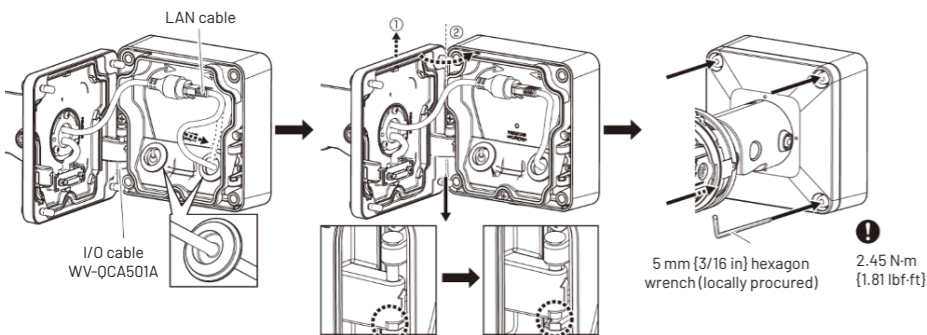
4 Install the adapter box mounting pin and mounting screw to hold the camera in place.



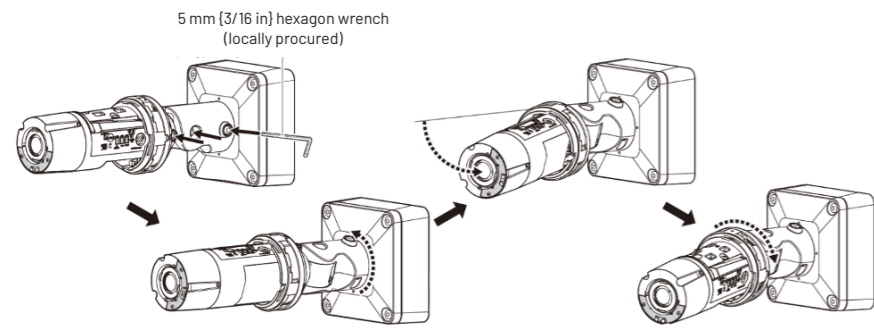
- 5 Install the grommet into the grommet cover and secure it with a screw.



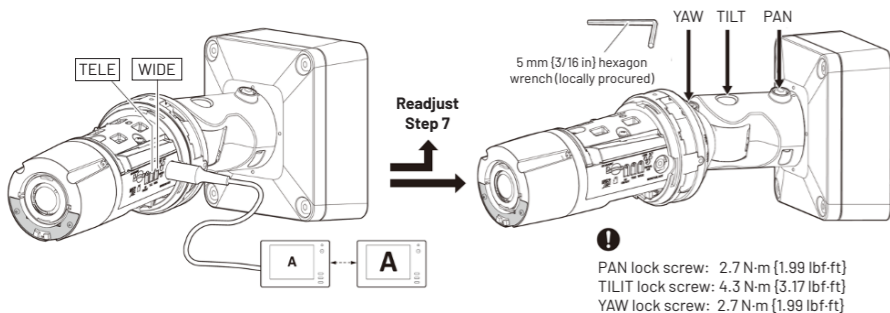
- 6 Connect the LAN cable and close camera so it is attached to the adapter. Then, secure it with the included hex screws.



- 7 Loosen pan, tilt and yaw screws and roughly aim the camera and level it. Then, tighten the screws until they are snug enough that the camera does not move (see the "Field-of-View" section in the product User Guide for guidance).



- 8 Connect the camera to the POE switch in the cabinet to provide power (the link light should turn orange). If you have an analog monitor, you can connect it to the monitor port and use the TELE and WIDE buttons to adjust the zoom to get the correct field of view (FOV). Otherwise, go to the next step to connect to Supervisor.



- 9 Connect a laptop to the maintenance port on the processor and open Supervisor. (See the "Software Installation" section in the product User Guide for guidance on how to install the Supervisor software).

- 10 On the Device screen for the camera, click **Camera Setup**.

RTSP Address

1. In the **Settings** menu, the RTSP Address will be 0.0.0.1. To populate it press the find button to cycle through the connected camera(s), once the correct camera is selected press apply. Then reboot the processor to re-enable streaming.

NOTE: This only needs to be done during the initial camera setup.

2. Click **Apply Changes**.
3. The RTSP Address will automatically find the camera and set it to the camera's IP address.
4. Click the refresh button to verify that the video stream is working.
5. Repeat steps 1-5 for any additional cameras.
If a specific order is desired, unplug all the cameras and plug one in at a time to learn it. Repeat for each camera.

Zoom

1. To change the zoom of the camera, click the play button to start the video stream.
2. Use the slider to zoom in or out until the desired field-of-view is shown.
NOTE: It will take a few seconds to show the new image and text will be displayed indicating that the camera is being focused.

Warp

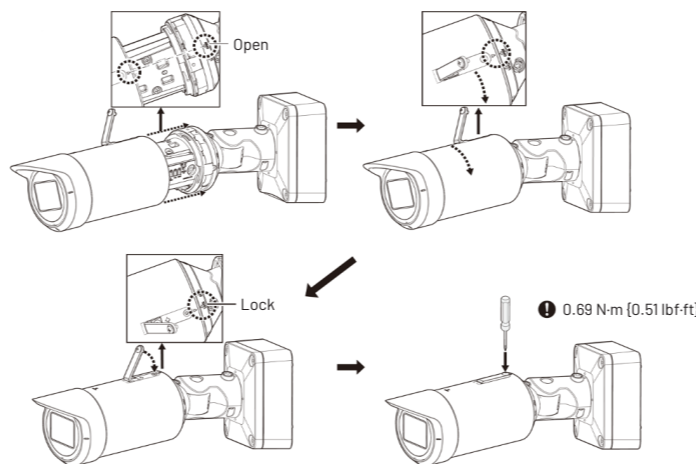
This feature may only be needed after the initial setup is complete and your zone lines do not appear straight.

1. If adjustments need to be made, move the slider one notch at a time until it gets to the desired look.
2. If any changes were made, click **Apply Changes**.
3. Click the play button to start a video stream.

- 11 Tighten the Pan, tilt and yaw the screws to the specified amount in step 7. Attach and secure the front part/cover.

NOTE: To make it easier to troubleshoot, connect the cameras to the Ethernet ports in the order you would like them to be listed in Supervisor. Remember this order when setting up the cameras in Supervisor so that CAM 1 will be connected to port 1 on the switch. Follow that process for remaining cameras.

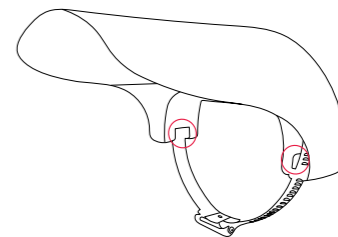
Double check the FOV is still good with Supervisor or VLC stream.



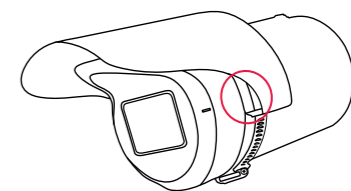
- See back page for guidance on how to install the sunshield (optional configuration) -

- 12 Sunshield Setup (Optional Configuration)

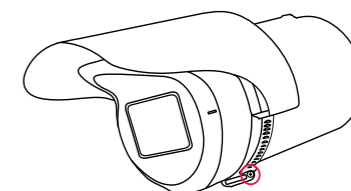
1. Insert the steel band through the mounting slots, forming a circle.



2. Mount the sunshield to the top of the camera, making sure it is flush with the lip of the existing sunshade.



3. Verify that the sunshield is centered over the top of the camera.
4. Tighten the steel band until secure using a 5/16 hex socket.



Website: imagesensing.com
Email: service@imagesensing.com

Rev A 230428

© 2023 Image Sensing Systems, Inc. All Rights Reserved. No part of this document may be reproduced or quoted without written permission from Image Sensing Systems, Inc.