

Autoscope Vision



Autoscope Vision® is taking video detection to new heights by offering a highly accurate, easy to use multi-tasking solution. The integrated camera-processor sensor provides high performance stop bar vehicle detection, bicycle detection and differentiation, advance vehicle detection, traffic data collection, and High-Definition video surveillance.

Building on four decades of proven above-ground video detection experience, Autoscope Vision delivers the highest levels of innovation and performance in an easy-to-use detection solution that supports a variety of traffic management and ITS applications. The performance of Vision is robust and reliable, and is based on a new hardware platform designed to enable future ITS capabilities and solutions.

Vision is complimented by a sophisticated Autoscope Comm Manager, a versatile communication hub with a small in-cabinet footprint that optimizes space efficiency. The Comm Manager supports local WiFi communications and streaming video to mobile devices.



Object detection
and motion tracking



Advanced technology
reimagined for the future



Innovative and
reliable performance





Autoscope Vision

Power

- 16W typical, 18W maximum
- 89 to 265 VAC, 60/50 Hz

Video

- HD streaming video output
H.264 720p (1280 x 720) video output
- Image snapshot resolution
1280 x 720

Lens

- Standard configuration:
Horizontal: 7.6 to 67.0 degrees
Vertical: 4.3 to 37.7 degrees
Focal Length 3.8mm to 38mm
- 10X motorized zoom

Camera

- 1/2.8" CMOS sensor
- 2MP
- Signal-to-noise > 50 dB
- Wide dynamic range
- Noise reduction
- High sensitivity mode

Housing and Sunshield

- Image sensor and processing board sealed in a waterproof and dust-tight housing (IP 67)
- Adjustable sun and weather shield with drip guard
- Mounting: standard camera bracket tilt-top provided
- Tilt-able sunshield for easy installation
- Tethered removable end cap for easy access to terminations without compromising the housing seal

Communications

- System connections via Autoscope Comm Manager Ethernet
RJ-45 WAN Port
- Ethernet RJ-45 for installation/maintenance
- WiFi communications via Autoscope Comm Manager for installation/maintenance and video streaming

Environmental

- 29° F to +165° F (-34° C to +74° C)
- Meets TS-2 standards
- Relative humidity of 0 to 95%, non-condensing

Dimensions and Weight

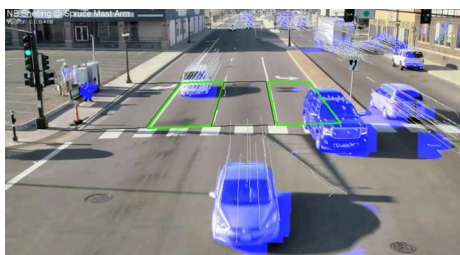
- H x W x L (with sunshield and bracket)
7 in x 5.5 in x 22.5 in (178 mm x 140 mm x 572 mm)
- 6.5 lb (2.95 kg)

Warranty

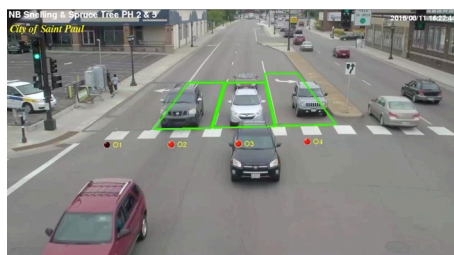
- Three-year warranty

Regulatory

- FCC Part 15, Class A
- ICES
- NEMA TS2-2003



Full screen object detection and motion tracking for best in class detection accuracy



Easy configuration and setup

info@imagesensing.com

imagesensing.com

Due to ISS' continuous efforts to develop the products that are most responsive to our customers needs, the above specifications are subject to change. To verify the current information, please visit the Image Sensing Systems website.

©2024 Image Sensing Systems, Inc. Part Number: 2315 Rev 240125



ImageSensing
systems