

RTMS Echo

Firmware v2.3 Release Notes

Overview

We have added some new features to simplify the installation of RTMS Echo further and also resolved several issues reported from the field. This also completes the final phase of the planned RTMS Echo hardware revisions. As a reminder, these hardware revisions do not impact the functionality of Echo, but rather, were designed to ensure ISS could continuously deliver high-quality products to our customers throughout the volatile supply chain conditions experienced over the last several years.

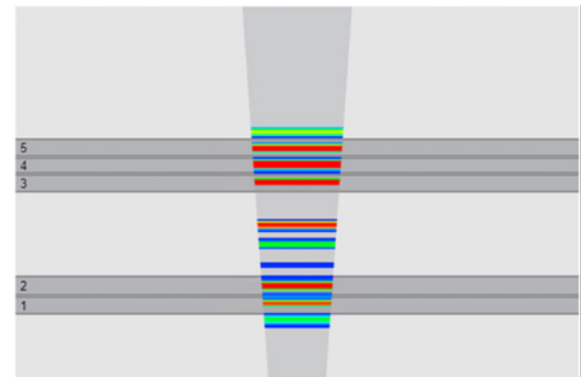
Usability Enhancements

We implemented some usability enhancements to help with setup and ease of use.

Heatmap auto-populates on the Zones page.

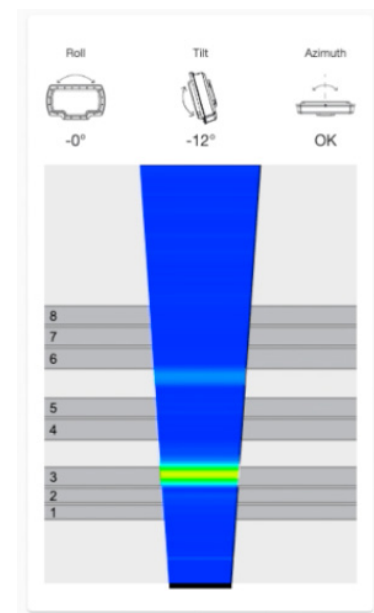
We've added the heatmap to the *Zones* page, so when you navigate to the *Zones* page for an already configured Echo, the roadway traffic heatmap will automatically populate. This allows you to confirm that your zones are positioned appropriately in relation to the location of where vehicles are being detected on the roadway.

Previously, the heatmap feature was only visible during the automatic zone-finding routine.



Configured zones now appear on the Aim page.

We've added the configured zones to the *Aim* page. This lets you quickly visualize live radar energy reflections and relate them to a zone. This tool is most useful for experienced users. It allows them to optimize their configuration by looking both at the energy reflected from vehicles and background energy from barriers or other existing infrastructure.



Bug Fixes

- We fixed an issue that caused the contact closure output(s) to remain in an active state under certain roadway traffic conditions.
- We fixed an issue with the Wavetronix Z1 Communications Protocol support of the Sensor Time Message.
- We fixed an issue causing Echo to become unresponsive if invalid network settings were configured.

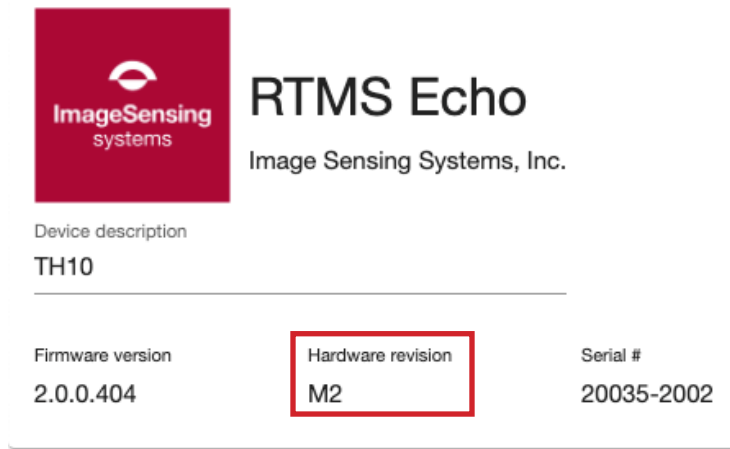
Update on RTMS Echo Hardware Revisions

The last phase of the planned hardware revisions of RTMS Echo has been completed. Newer Echo hardware revisions will be supported by a minimum version of software, as summarized in the table below:

Echo Hardware Revision	First Ship Date	Supported Firmware Versions
M2	February 2020	V1.0+
M4	June 2022	V2.1+
M5	Q1 2024 (estimated)	V2.3+

How Do I Check My Hardware Revision?

1. Log into the Echo web app using your Internet browser of choice.
2. Navigate to the Settings page.
3. The hardware revision will be listed as shown:



The screenshot shows the RTMS Echo settings page. At the top left is the ImageSensing systems logo. To its right, the text reads "RTMS Echo" and "Image Sensing Systems, Inc.". Below this is the "Device description" section, which lists "TH10". A horizontal line separates this from the "Firmware version" section, which lists "2.0.0.404". To the right of the firmware version is the "Hardware revision" section, which lists "M2" and is highlighted with a red rectangular box. To the right of the hardware revision is the "Serial #" section, which lists "20035-2002".