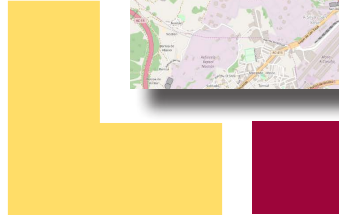
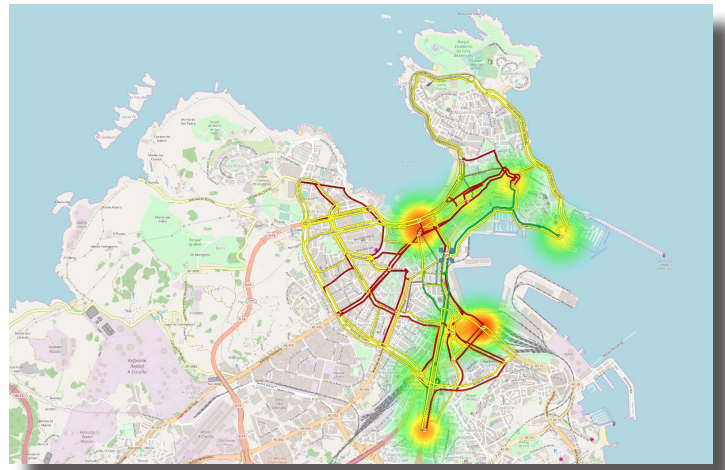


# DeepBlue Core+



The DeepBlue Core+ is the trafficnow® data analysis tool offering an extensive amount of matrices for origins, waypoint and destinations. The Core+ allows studying the flow and distribution of the traffic in and around a city. The system provides extensive information about who uses the roads, the lengths of the journeys and vital information for mobility planning.

The DeepBlue Core engine uses advanced algorithms to separate vehicles from pedestrians, and the DeepBlue Core+ uses this information to investigate the distribution of the traffic throughout the network of sensors.

A set of departure matrices looks at where the vehicles go from an origin or waypoint, and a set of arrival matrices look at where the vehicles have been prior to reaching a destination or waypoint. You can choose one sensor or all sensors and pick the time interval required for the study.

## BENEFITS

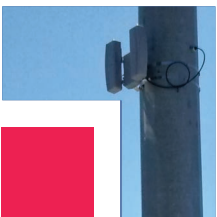
- Cost-effective solution
- Field proven reliability
- Easy to install, configure and maintain
- Easily accessible from anywhere

## FEATURES

- Web-based system
- DeepBlue sensor matrix generation
- Various types of departure matrices
- Various types of arrival matrices
- OSM GIS interface
- Google maps support (license not included)

## APPLICATIONS

- Origin/destination matrix
- Route matrix
- Turning movements
- Paths



# DeepBlue Core+

## SPECIFICATIONS

### Data

- Optimized for DeepBlue and RTMS
- 8 origin-based matrices
- 8 destination-based matrices
- Traffic data including numerous reports

### Setup/System

- Web-based solution
- Different user levels
- Multi-language support
- Multiple simultaneous sessions
- GPS-based setup
- Linux, MySQL
- Local install at traffic control center
- Clouding at Virtual Control Center
- IP-based network; FTP, SSH, TCP Socket

### Diagnostic

- Health monitoring
- Battery level alarms
- Data transfer logs
- Reboot logs
- Modem diagnostics
- Dynamic IP-updates
- Automatic email notifications

### Visualization

- Google Maps (requires license)
- OSM
- Matrices
- Heat maps
- Graphs

### Output

- XML data-forwarding
- Integration through Web services
- Excel for report/data download

### System Guidelines

- Processor: Dual
- CPU/Clock: 2.60 GHz octa-core
- Controller: 12 Gb/s SAS RAID
- Communication: Gigabit Ethernet
- RAM: Min. 32 GB
- Operating System: Linux

## CONTACTS

### World Headquarters

500 Spruce Tree Centre  
1600 University Avenue West  
St. Paul, MN 55104 USA  
Phone: +1.651.603.7700  
Fax: +1.651.305.6402  
info@imagesensing.com  
imagesensing.com

### Image Sensing Systems Romania

Dobrogeanu Ghenea Constantin Street  
10-12, et1, ap1  
Sector 1, 013764, Bucharest  
Romania  
Phone +4.021.794.55.60  
Fax +4.021.794.55.66  
issro@imagesensing.com

### Image Sensing Systems Spain

C/ Consell de Cent 357-359, 5-1  
08087 Barcelona  
Spain  
sales@imagesensing.com

