

DeepBlue

Sensor v2t R-Model



The DeepBlue Sensor v2t R-Model by trafficnow® - a Bluetooth® sensor for integration in your roadside cabinet or traffic controller. Easily mounted on a DIN-rail or in a 3U rack. A unique auto-configured, easy-to-install side-fire Sensor that detects the Bluetooth® signals from vehicles; from hands free sets, mobile telephones and navigation systems. Operates in up to 12 lanes.

The ideal sensor for getting online travel time information and origin/destination information for improved infrastructure planning, or for public transport priority.

Suitable in an urban environment, in a larger metropolitan area or on the interstate.

BENEFITS

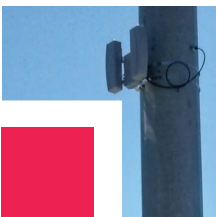
- Cabinet integration
- No external cabling needed
- Field proven technology
- Cost-effective solution for traffic management
- Easy to install and configure
- Each installed unit has the flexibility of performing a variety of tasks

FEATURES

- Automatic detector configuration
- Remote Sensor Access
- Multi-lane, side-fire sensor
- Vehicle Detection and Tracking
- Recognition of Unique Identification for White list applications
- Incident Detection / Travel time
- Non-volatile memory data storage
- Self test on power-up (LED indicator)
- Low power consumption
- Fast, reliable and secure data transmission

APPLICATIONS

- Travel time
- Online web based applications
- Traffic Engineering (O/D matrices)



DeepBlue Sensor R-Model

SPECIFICATION

Power

- 12 to 48 VDC
- Min 1.93W (configuration dependent)

CPU

- ARM 9 Processor

Memory

- 128 MB RAM
- Micro SD storage

Communications

- Ethernet connector
- Optional 3G/CDMA worldwide
- Remote sensor access
- Optional general purpose IO
- Serial RS232/RS485

Operations

- Linux based OS
- LED for operations diagnostics
- PCB for DIN-rail mount or 3U rack

Environmental

- -35°C to +80°C
- 0 to 90% relative humidity

Dimensions and Weight

- H x W x L
- 124 mm x 50 mm x 174 mm (not including antennas)
- 0.60 kg

Bluetooth

- Single or Dual channel operation
- Detects all Bluetooth® versions
- More than 500 meter range
- -104dB receive sensitivity

Regulatory

- RoHS Compliant
- FCC
- CE certified

CONTACTS

World Headquarters

500 Spruce Tree Centre
1600 University Avenue West
St. Paul, MN 55104 USA
Phone: +1.651.603.7700
Fax: +1.651.305.6402
info@imagesensing.com
imagesensing.com

Image Sensing Systems Romania

Dobrogeanu Ghenea Constantin Street
10-12, et1, ap1
Sector 1, 013764, Bucharest
Romania
Phone +4.021.794.55.60
Fax +4.021.794.55.66
issro@imagesensing.com

Image Sensing Systems Spain

C/ Consell de Cent 357-359, 5-1
08087 Barcelona
Spain
sales@imagesensing.com

