

DeepBlue

# Sensor v2t D-Model



The DeepBlue Sensor D-model by trafficnow® - a unique dual channel Bluetooth® sensor deploying two powerful antennas for real side fire operation. Specially designed antennas for extreme sensitivity, longer range and faster scanning; for enhanced detection of fast moving vehicles in up to 12 lanes.

A multi-lane, auto-configured, easy-to-install side-fire Sensor that detects the Bluetooth® signals from vehicles; from hands free sets, mobile telephones and navigation systems.

The ideal sensor for getting online travel time information and origin/destination information for improved infrastructure planning.

Suitable for the inter-urban environment.

## BENEFITS

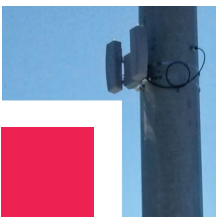
- Side-fire; zero set-back
- Field proven technology
- Cost-effective solution for traffic management
- Easy to install and configure
- Each installed unit has the flexibility of performing a variety of tasks

## FEATURES

- Automatic detector configuration
- Multi-lane, side-fire sensor
- Vehicle Detection and Tracking
- Recognition of Unique Identification for White list applications
- Incident Detection / Travel time
- Non-volatile memory data storage
- Self test on power-up (LED indicator)
- Low power consumption
- Fast, reliable and secure data transmission

## APPLICATIONS

- Travel time
- Online web based applications
- Traffic Engineering (O/D matrices)



# DeepBlue Sensor D-Model

## SPECIFICATION

### Power

- 12 to 48 VDC
- Min 2.20W (configuration dependent)
- PoE (Power over Ethernet)

### CPU

- ARM 9 Processor

### Memory

- 128 MB RAM/Flash
- Micro SD storage

### Communications

- Ethernet connector
- Optional 3G/CDMA worldwide
- Dual SIM card slot
- Remote sensor access
- Optional general purpose IO
- Serial RS232/RS485

### Operations

- Linux based OS
- LED for operations diagnostics

### Environmental

- -35°C to +80°C\*
- 0 to 90% relative humidity
- IP65 housing

### Dimensions and Weight

- H x W x L
- 337 mm x 413 mm x 150 mm
- 2.65 kg including stainless steel brackets

### Bluetooth

- Dual channel operation
- Two side-mounted antennas
- 110° horizontal angle; 30° vertical angle
- Detects all Bluetooth® versions
- More than 500 meters range
- -104dB receive sensitivity

### WiFi

- Optional WiFi detection

### Regulatory

- RoHS Compliant
- FCC
- CE certified
- IC

## CONTACTS

### World Headquarters

500 Spruce Tree Centre  
1600 University Avenue West  
St. Paul, MN 55104 USA  
Phone: +1.651.603.7700  
Fax: +1.651.305.6402  
info@imagesensing.com  
imagesensing.com

### Image Sensing Systems Romania

Dobrogeanu Ghenea Constantin Street  
10-12, et1, ap1  
Sector 1, 013764, Bucharest  
Romania  
Phone +4.021.794.55.60  
Fax +4.021.794.55.66  
issro@imagesensing.com

### Image Sensing Systems Spain

C/ Consell de Cent 357-359, 5-1  
08087 Barcelona  
Spain  
sales@imagesensing.com

## Speed Map

