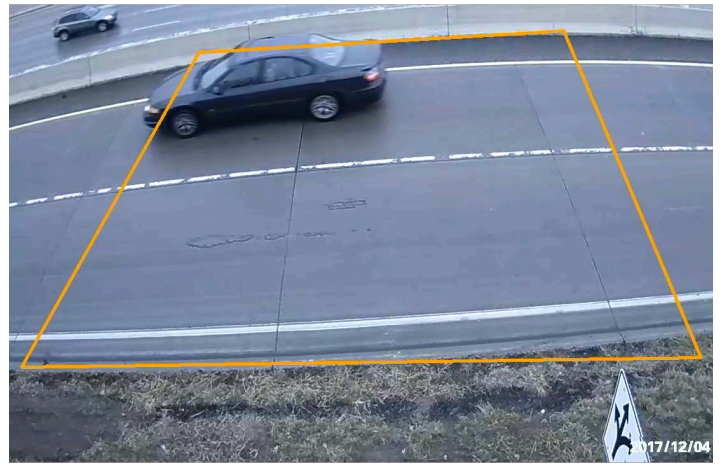


Automatic Incident Detection Wrong Way Alerting Solution



The Automatic Incident Detection (AID) Wrong Way Alerting solution is an all-in-one system that provides reliable wrong way detection on ramps. This module is a side-fire sensor that can detect vehicles traveling the wrong way on ramps.

The wrong way module detects wrong way vehicles and sends an automated message alert with an image snapshot via E-mail or short message service (SMS). The system also provides a 30 second video of the event, allowing traffic operators to visually confirm the wrong way vehicle and provide emergency officials the details of the vehicle.

The system is easy to configure and setup using the Supervisor software. The Supervisor software allows the traffic operator to easily configure the detection zones back at the traffic management center.

Drivers wrongfully entering the highway from an off-ramp pose a serious safety risk and can result in injury or fatalities. The detection of these wrong way drivers is vital to reducing these risks. This module provides accurate detection and fast notification to help improve the safety performance of roadways.

BENEFITS

- Fast, safe installation with no traffic disruptions
- Integrates with existing RTMS Sx-300 HDCAM installations
- Monitor any portion of the ramp with a single zone
- Provides a visual verification snapshot of wrong way detection
- Low power requirement allows low cost solar power operation

FEATURES

- Provides single zone wrong way detection using one camera on a ramp
- Automated message alerts with snapshot via E-mail and SMS
- Simple to setup and configure
- Pre and post video event capture and storage of incident
- Excellent image quality even in low light conditions
- High Definition video streaming of incident
- Detection of an event signals the contact closure to activate signs and/or flashing lights

APPLICATIONS

- Ramp detection



Wrong Way Alerting Solution

SPECIFICATION

Power

- Operates on 5 VDC @ 1.5W max standard
- Power supply operates on 110 - 240 VAC

Processor

- ARM A9
- 1 GHz Quad Core

Storage

- 4GB flash storage

Communications

- Ethernet 10/100/1000

Mechanical

- Dimensions
114 x 76 x 29 mm (4.5 x 3 x 1.125 in)
- Weight
0.23 kg (0.5 lb)

Environmental Conditions

- Temperature range
-40° to +74°C (-40° to 165°F)

Warranty

- One (1) year warranty

Regulatory

- FCC
- NEMA TS2-2003
- CE EN 55032, EN 55024, EN 61000-3-2, EN 61000-3-3
- ICES 003



Wrong Way processor

External Contact Closure

Power

- 12 to 36 VDC
- 188 mA @ 24 VDC

Inputs and Outputs

- 6 channels
- Isolation: 3k VDC or 2k Vrms

Communications

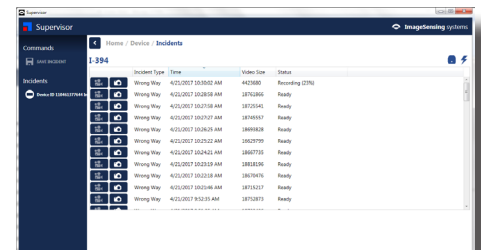
- 2 switched 10/100 Mbps RJ45 ports
- Modbus/TCP (Slave), EtherNet/IP, SNMPv1/v2c, RESTful API, TCP/IP, UDP, DHCP, BOOTP, HTTP

SET-UP AND OPERATION

The wrong way module is easy to setup, install and configure using the Supervisor software.



Easy visual zone setup



Incidents Log allows user to easily view all incidents and view snapshots and download the event video



RTMS Sx-300 HDCAM

Wrong Way processor inside the cabinet communicates back to the traffic management center



CONTACTS

World Headquarters

500 Spruce Tree Centre
1600 University Avenue West
St. Paul, MN 55104 USA
Phone: +1.651.603.7700
Fax: +1.651.305.6402
info@imagesensing.com
imagesensing.com

Image Sensing Systems Romania

Dobrogeanu Ghenea Constantin Street
10-12, et1, ap1
Sector 1, 013764, Bucharest
Romania
Phone +4.021.794.55.60
Fax +4.021.794.55.66
issro@imagesensing.com

Image Sensing Systems Spain

C/ Consell de Cent 357-359, 5-1
08087 Barcelona
Spain
sales@imagesensing.com